

SALLY WANG
FASHION PORTFOLIO

behind_the_screen|
bfa_thesis_menswear_collection

concept_statement

social media sites often present people with an interface that seems flat and superficial, the experience of using it appears to be uneventful. however, behind this flat interface, there is a whole other dimension of social media that we don't normally think about. it is a dimension that evokes much more of an emotional response; and for most of the time, anxiety-inducing. from the uneasiness people experience when not getting enough likes, to the fact that an overwhelming amount of information is being processed without thinking. for my thesis I aim to bring the complexity of this dimension to light, in the hopes of raising awareness.

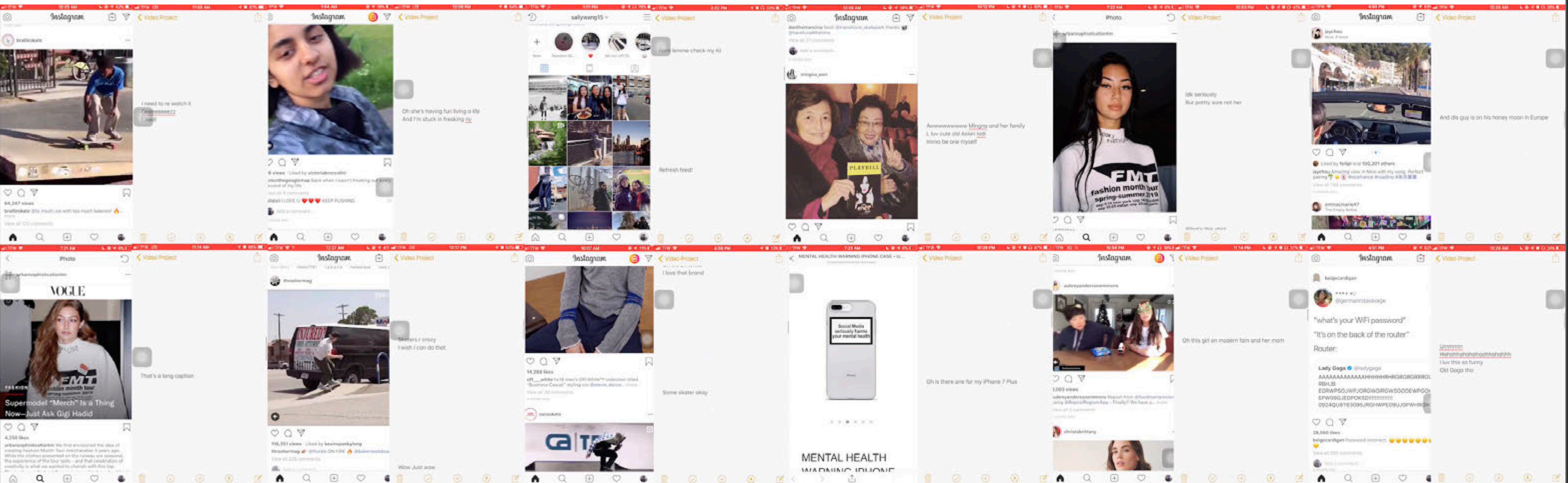




video/installation_experimentation

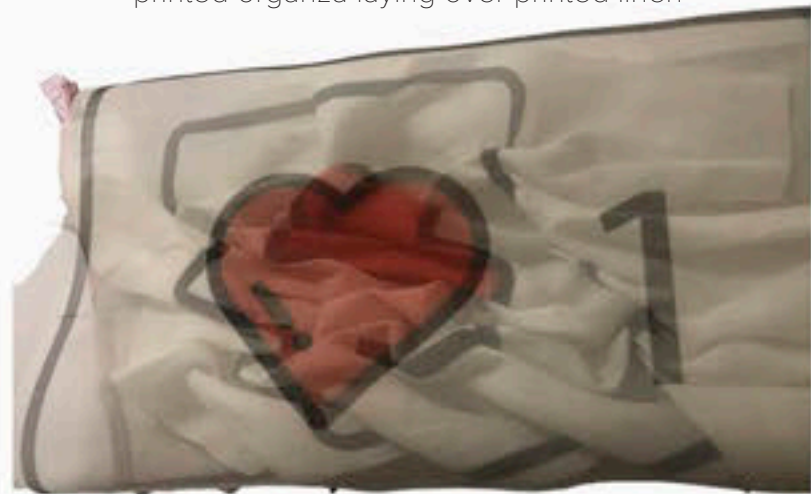
In the film, I have recorded some of my daily social media usages, and put it side by side with the subtitles of thoughts that were occurring at the time. Later, I combined all the recordings in a single frame, in order to visually represent the overwhelming amount of content and the ridiculously fast

fixed_frame_video: <https://www.youtube.com/watch?v=8LqeZBTPvaQ>
360_video: <https://www.youtube.com/watch?v=9vCQPLhytYk&t=39s>





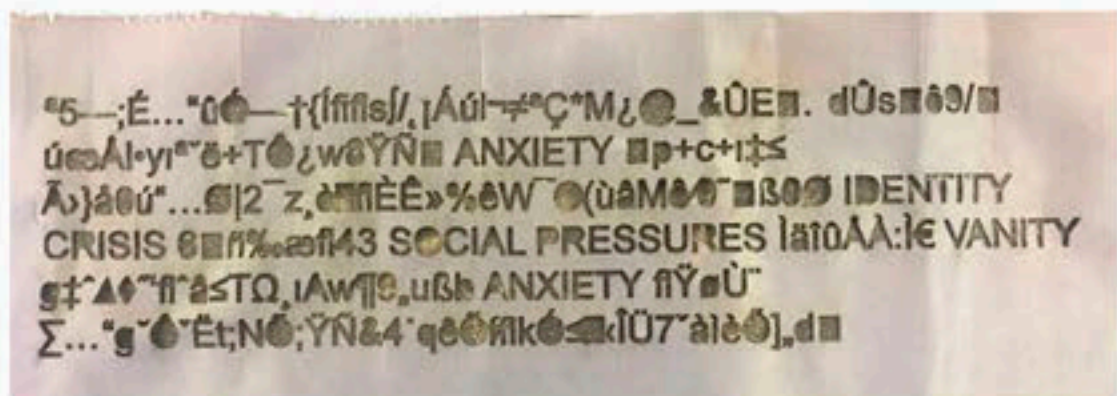
printed organza laying over printed linen



printed organza laying over smocked lien with the same print



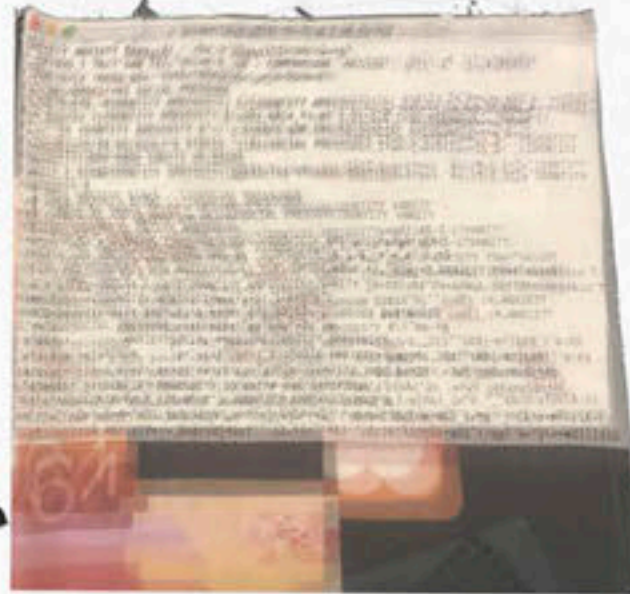
laser cut (engraved) coding on to reflective silk taffeta, with attempts of arrow smocking



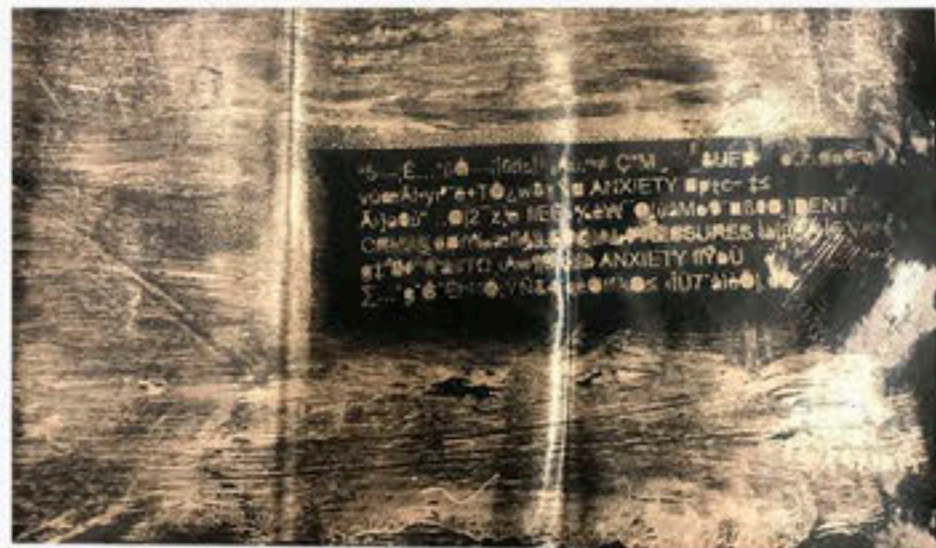
laser cut coding on to reflective silk taffeta



printed organza laying over reflective tyvek, box smocking over two layers



printed organza (with coding print) laying over linen with the same print



spray painted coding (through laser cut card stock stencil) on to reflective vinyl



spray painting coding (through laser cut card stock stencil) on to stretch velvet



laser cut gridded organza laying over reflective silk taffeta with bias binding velvet

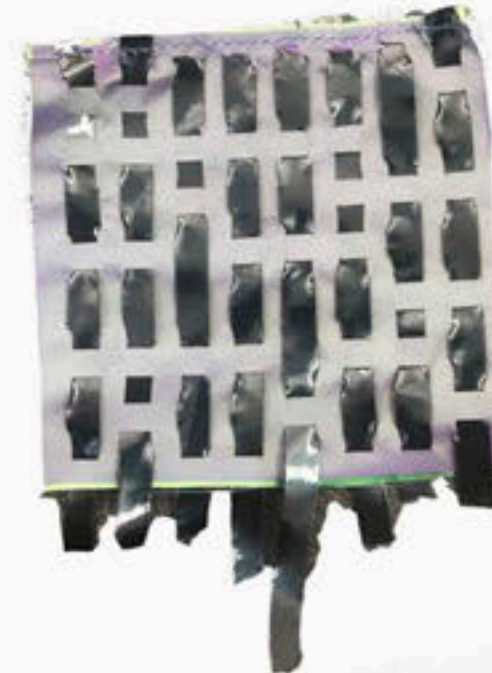
print

with print, I started with taking on some recognizable social media them in a way that creates disease by layering and distorting texture



weave inspired by pixelation, made with reflective vinyl, printed linen, and reflective stretch velvet

reflective vinyl strips weaved through laser cut grid silk taffeta



knitted reflective tyvek stripe



knitted reflective vinyl stripe

knitting weaving and other abstract techniques

material_development

in the development of my materials, I initially started with the manipulation of prints, borrowing popular social media icons, manipulating them in a way that creates anxiety.

drawing inspiration from the grander scheme of internet and technologies, I went on creating fabric manipulations that have a reference to pixelations, coding, glitches, through the technique of laser cutting, stenciling, and spray painting.

to further emphasize the idea of anxiety, I also experimented with techniques such as smocking and knitting with the created fabric, in attempt to distort the material.



knitted two-color transparent poly organza



arrow smocked stretch velvet with spray painted coding print

knitted stretch velvet with spray painted coding print

laser_cutting

with laser cutting, I experimented with the techniques of directly engraving coding/print on to the fabric, as well as creating stencils then spray paint through stencils

design_iteration



projection_experimentation

initial experimentation with projection of social media usage, fabric manipulation, and drapes on to fabric and dress form
 video: <https://youtu.be/Yp3gdVHsFRg>



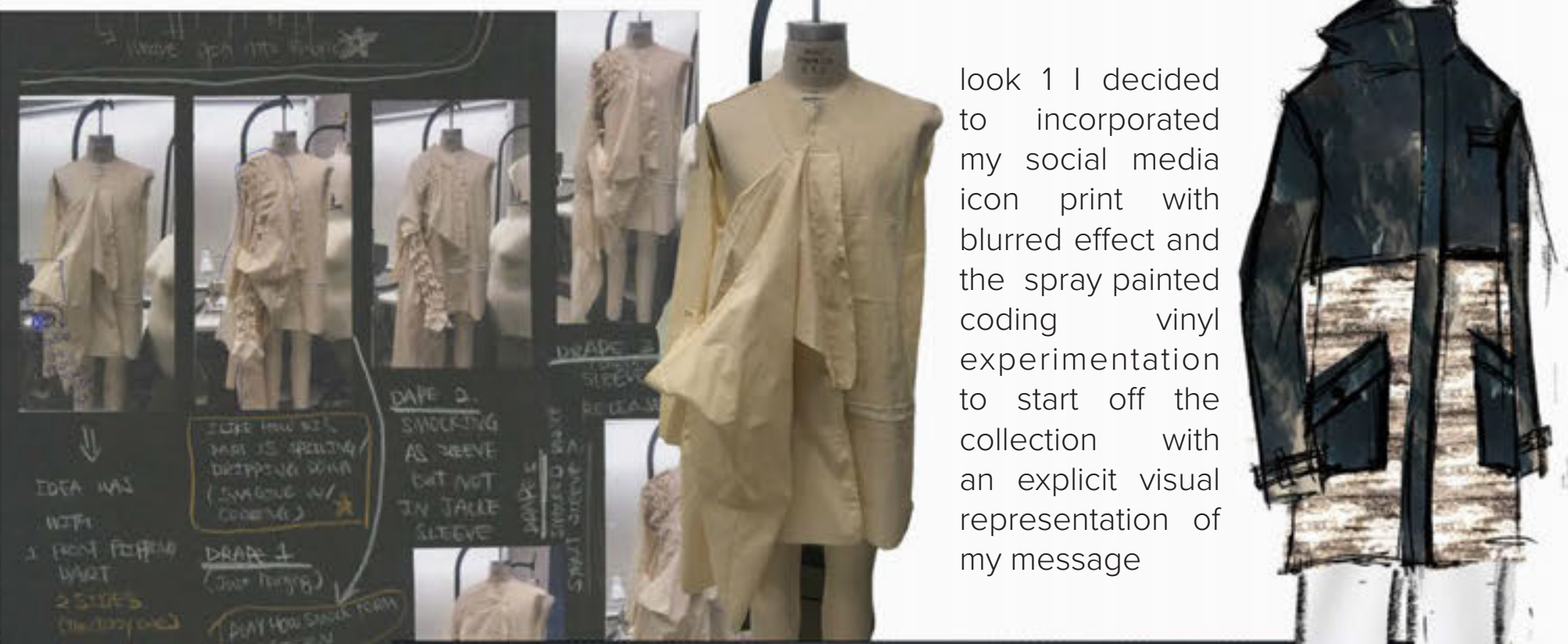
draping_explorations_with_fullsize_manipulation_samples



collage_with_material_manipulations



look_1_development



look 1 I decided to incorporate my social media icon print with blurred effect and the spray painted coding vinyl experimentation to start off the collection with an explicit visual representation of my message



construction_sketches



double layered vinyl jacker with one short layer than one long one; bottom layer spray painted with coding print

cuff: vinyl; waistband with drawstring; side seam pockets

look_2_development



left+right same pattern (chat box), but blocked in different ways to create flat surface vs distorted surface

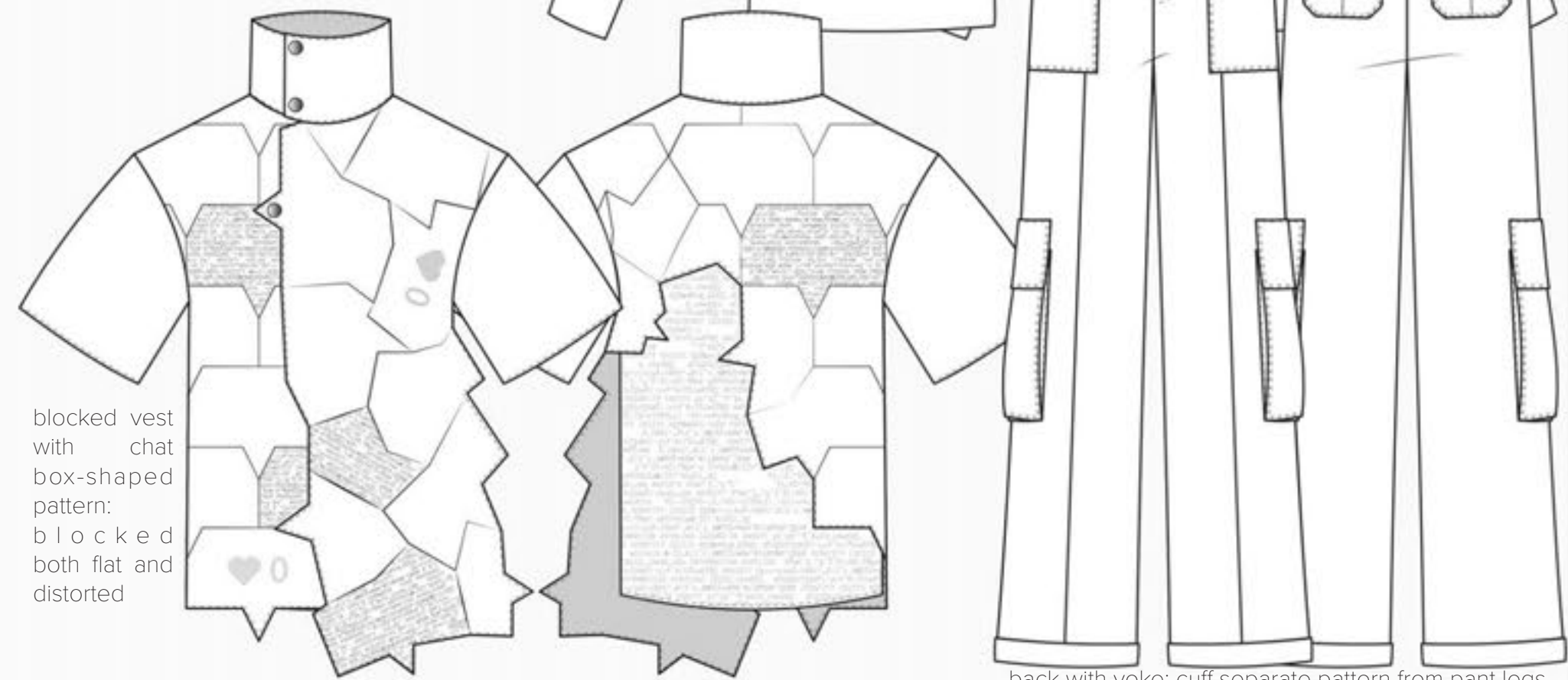
with look 2, I experimented mostly with construction, manipulating the shape of social media icon into pattern, creating design which speaks to the anxiety-inducing aspect of social media

INITIAL SILHOUETTE LOOK 2 FITTING



raglan sleeve; organza print over iron print to create blurred effect

construction_sketches



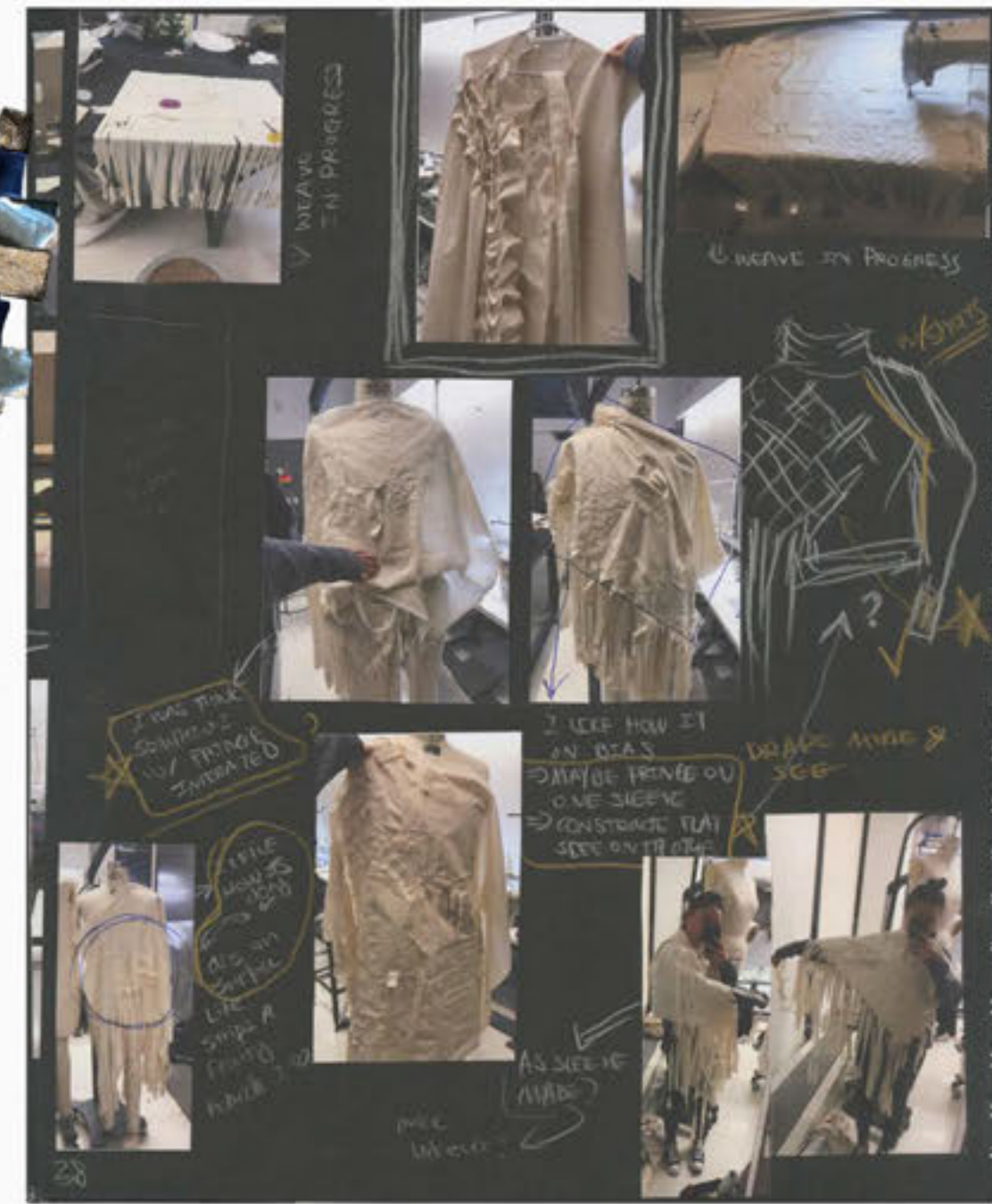
blocked vest with chat box-shaped pattern: blocked both flat and distorted

back with yoke; cuff separate pattern from pant legs

look_3_development



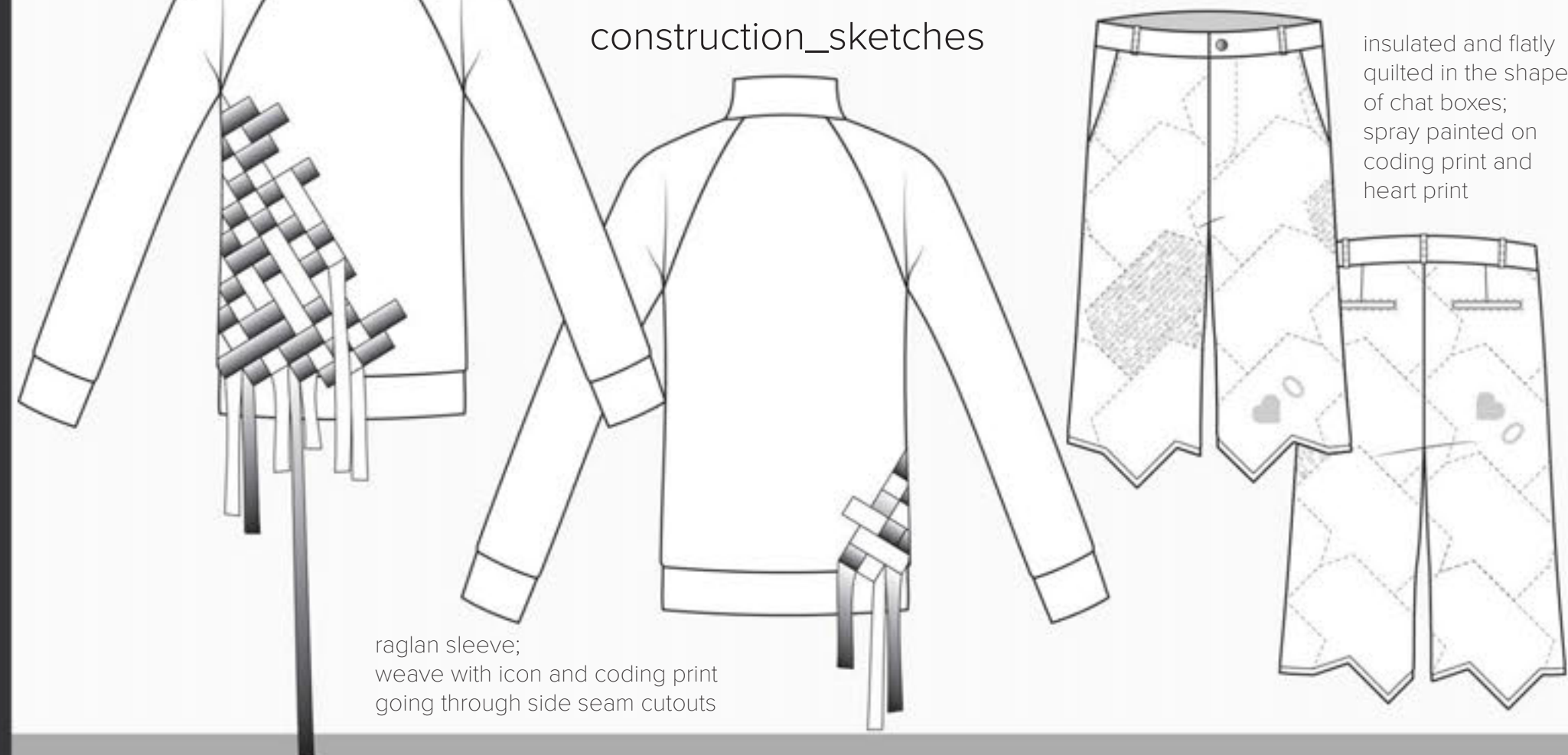
look 3 is majoritively material-inspired. after the initial material experimentation, I created bigger samples in muslin, which is then used for draping and generating design ideas (as shown on the right.)



INITIAL SILHOUETTE LOOK 3 FITTING



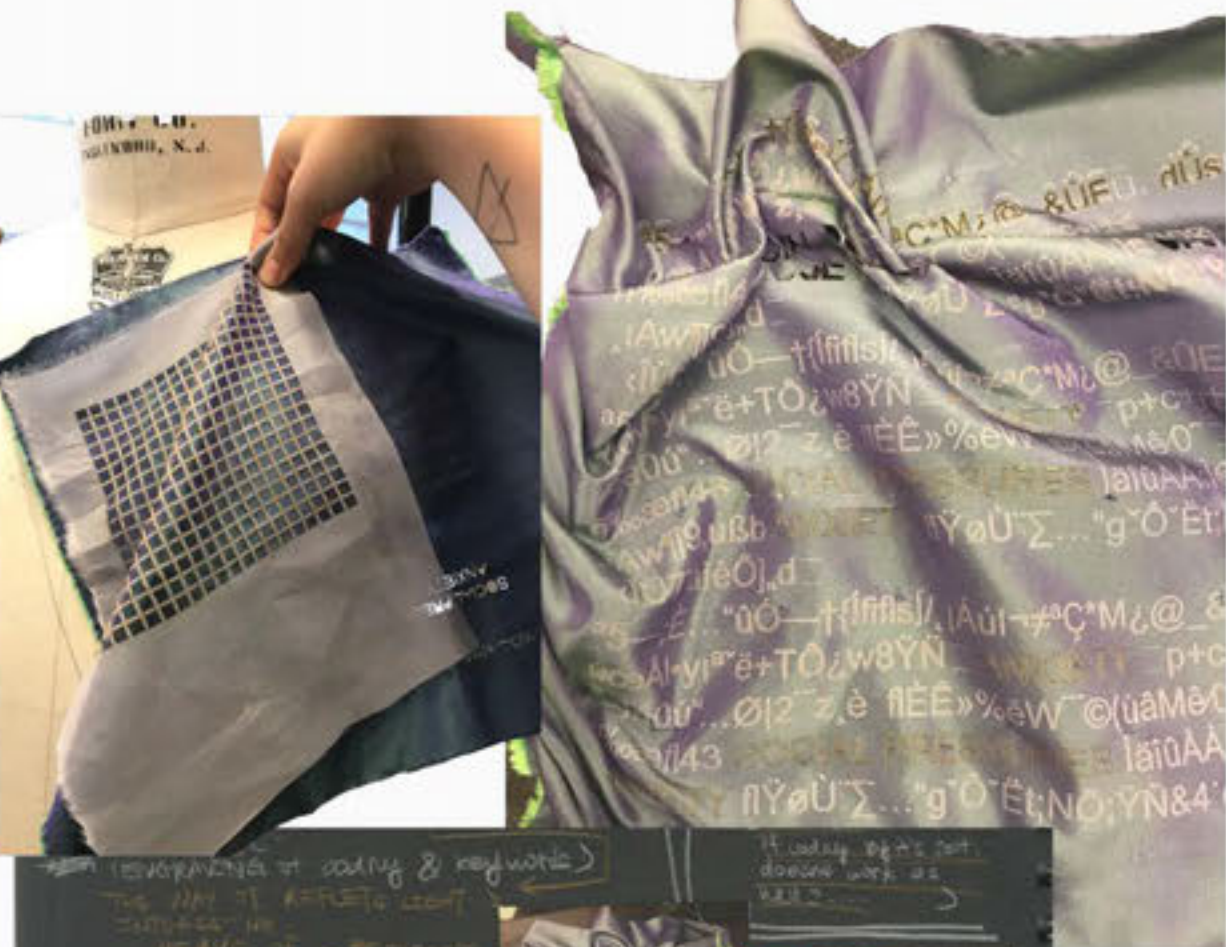
construction_sketches



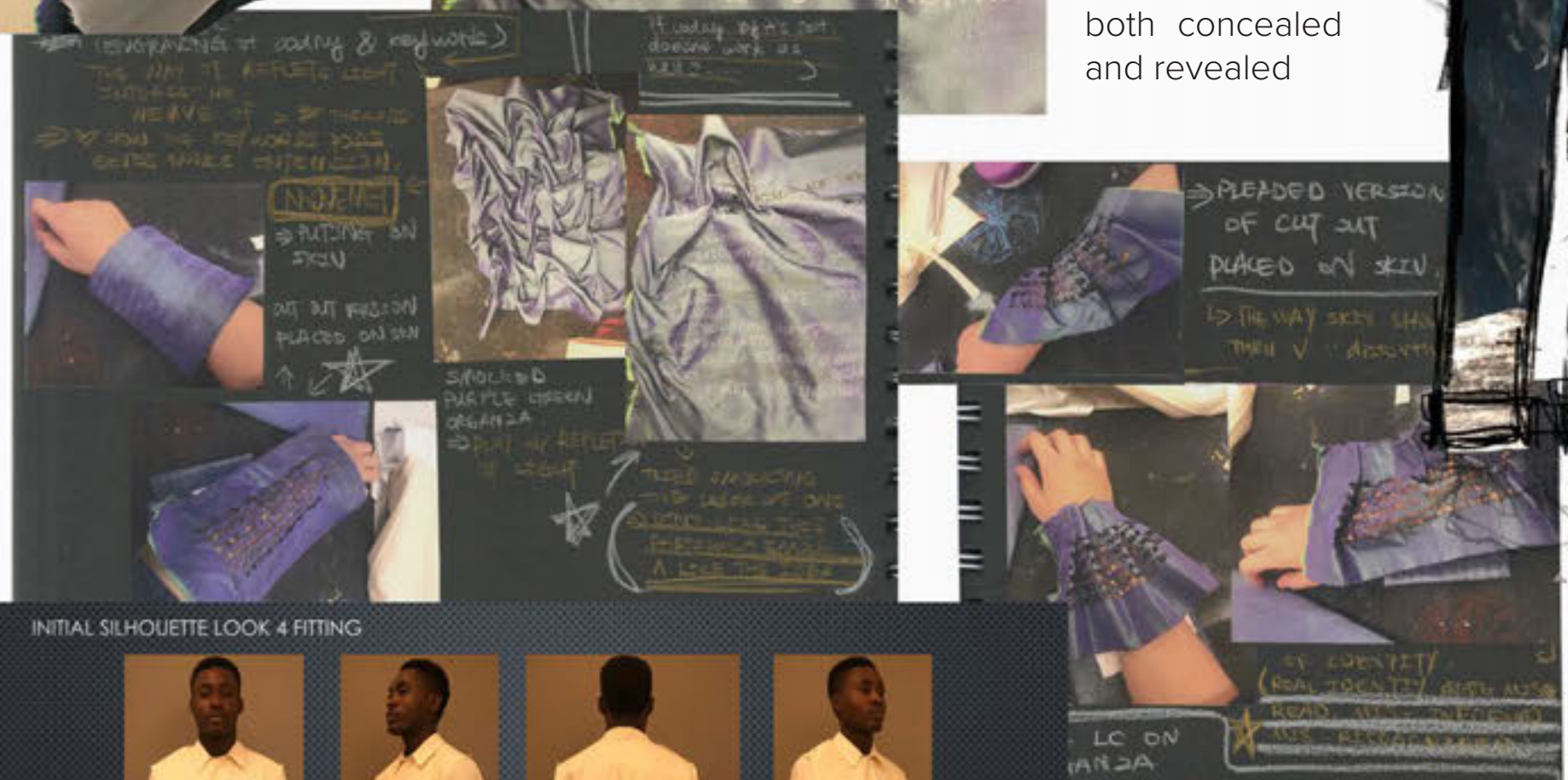
raglan sleeve; weave with icon and coding print going through side seam cutouts

insulated and flatly quilted in the shape of chat boxes; spray painted on coding print and heart print

look_4_development



for look 4, I decided to incorporate one of the laser cut techniques into a button down shirt, while keeping in mind the layered surfaces of social media, manipulating the pattern in a way where parts of the garment is both concealed and revealed



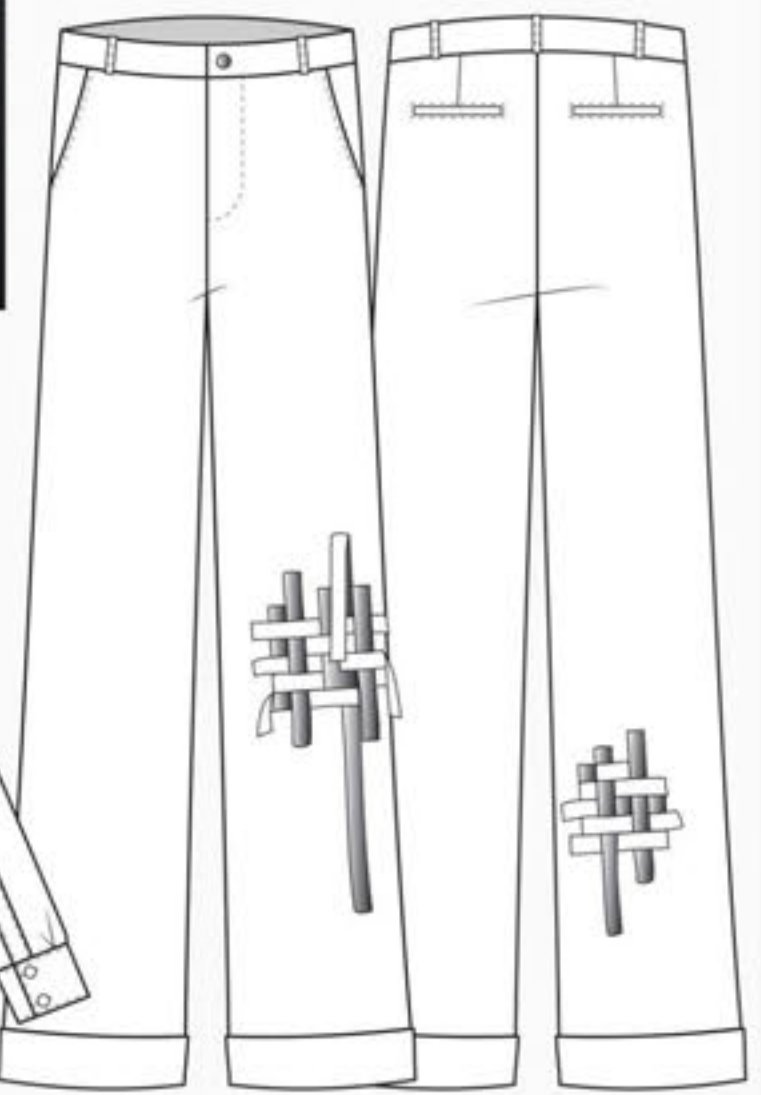
INITIAL SILHOUETTE LOOK 4 FITTING



construction_sketches



top layer with grid laser cut; bottom layer with coding engraving; separate center placket pattern with the bodices piece sandwiched in



weave inserted at front and back; welt pockets on back

look_5_development



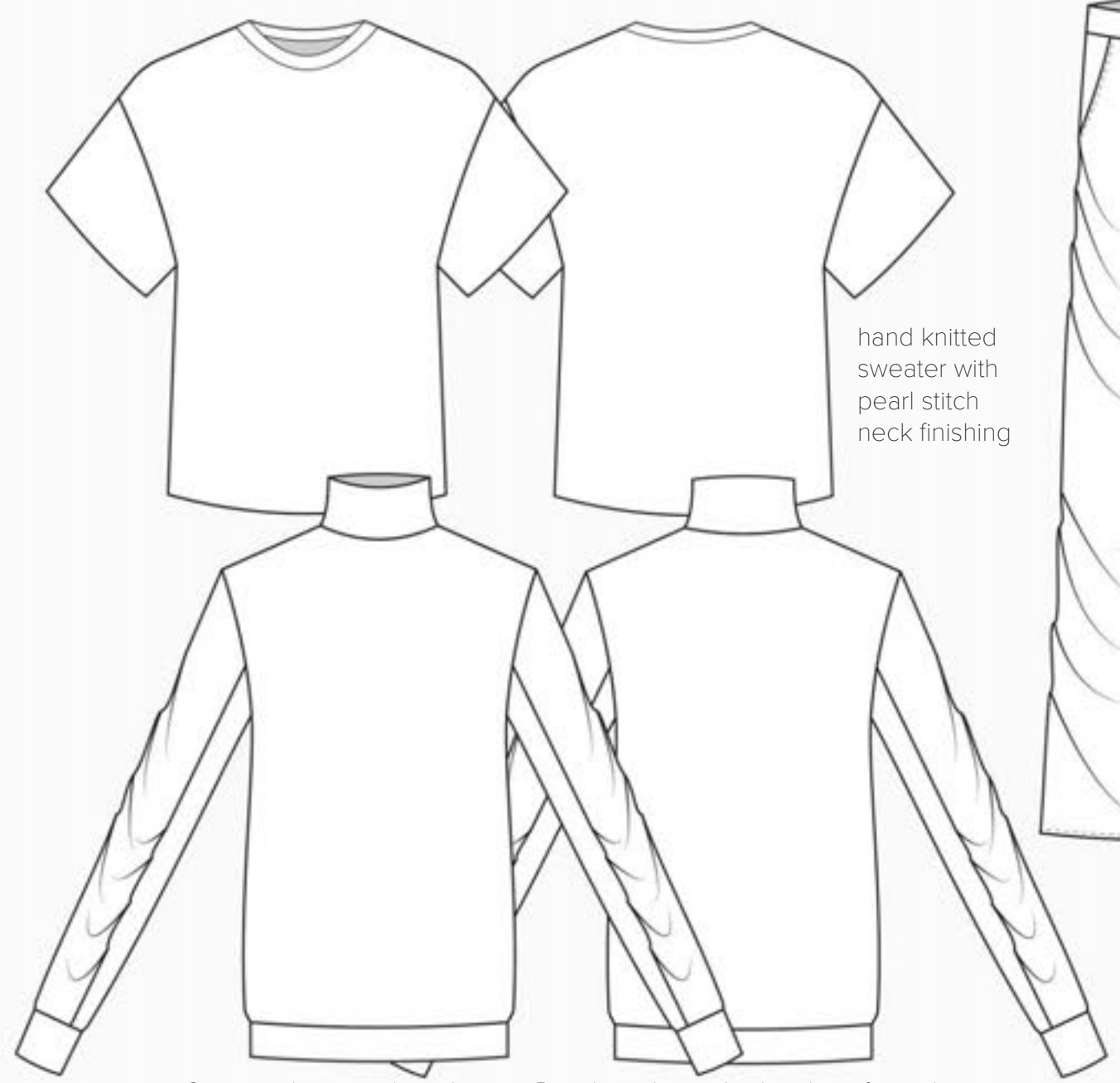
for look 4, I decided to knit an armor like sweater with a the vinyl knit that I experimented with, and putting it on top of a gathered sleeve stretch velvet sweater.



INITIAL SILHOUETTE LOOK 5 FITTING

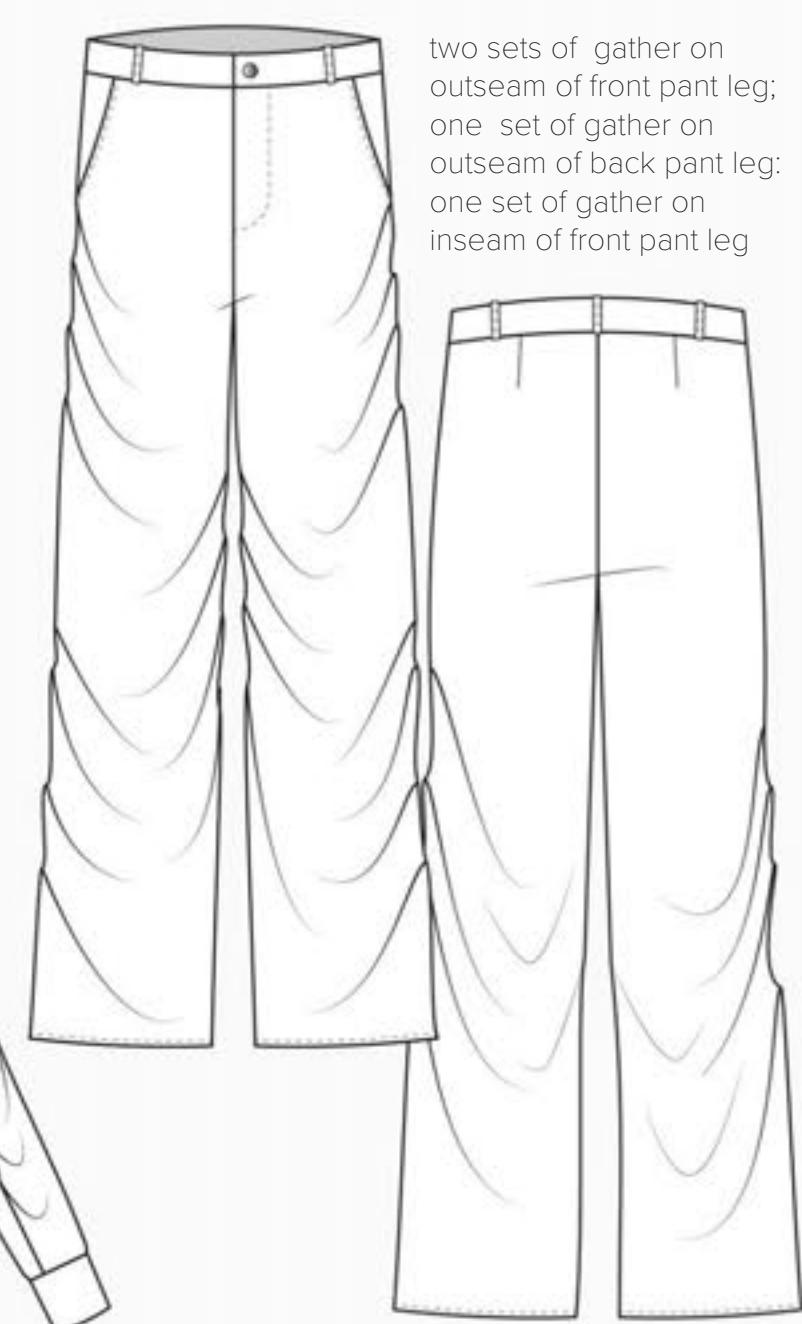


construction_sketches



hand knitted sweater with pearl stitch neck finishing

2 piece sleeve with under arm Panel; gather at both sides of top sleeve



two sets of gather on outseam of front pant leg; one set of gather on outseam of back pant leg; one set of gather on inseam of front pant leg

collection_line_up



look_1

look_2

look_3

look_4

look_5

collection_line_up



look_1

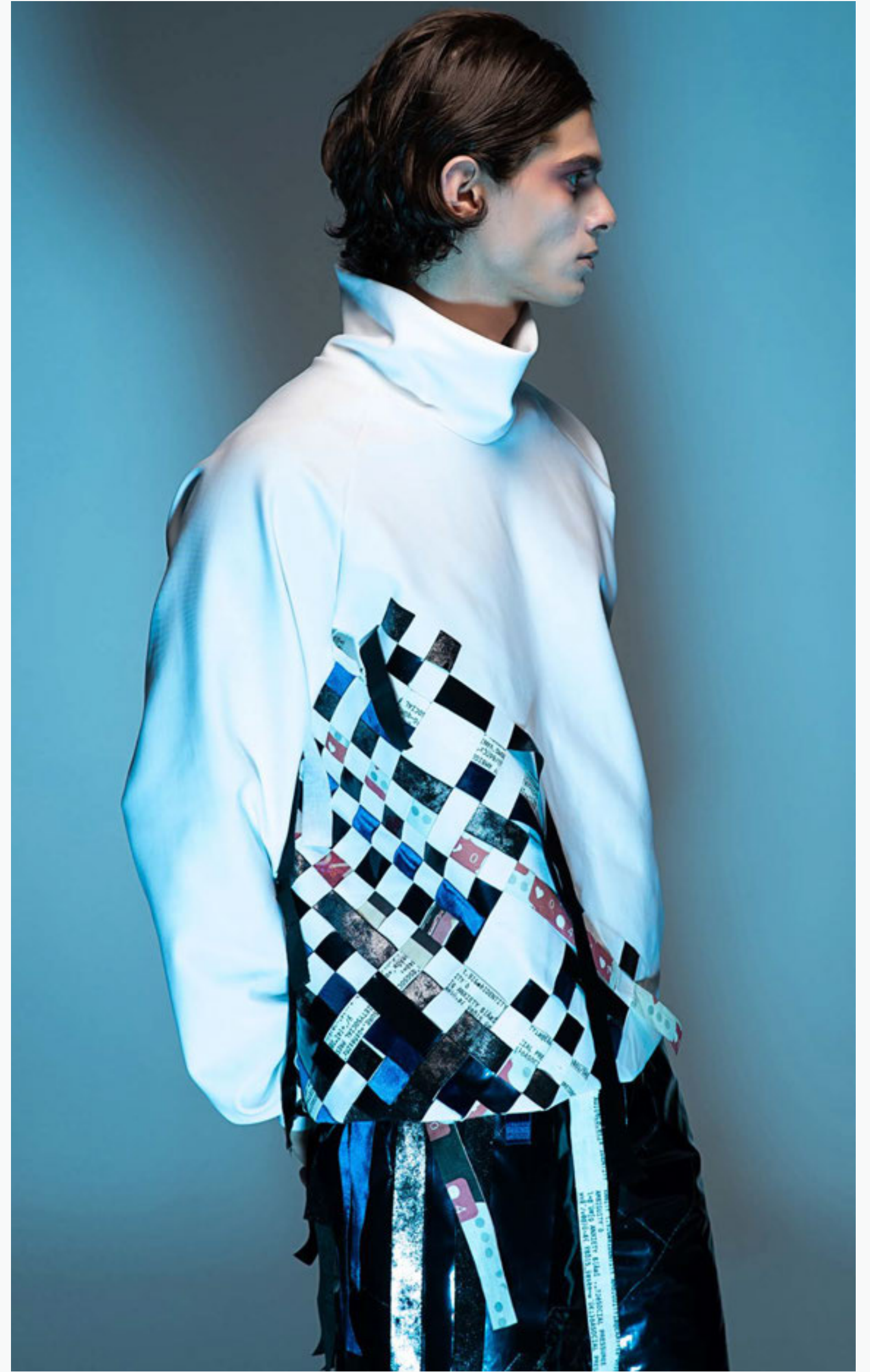
look_2

look_3

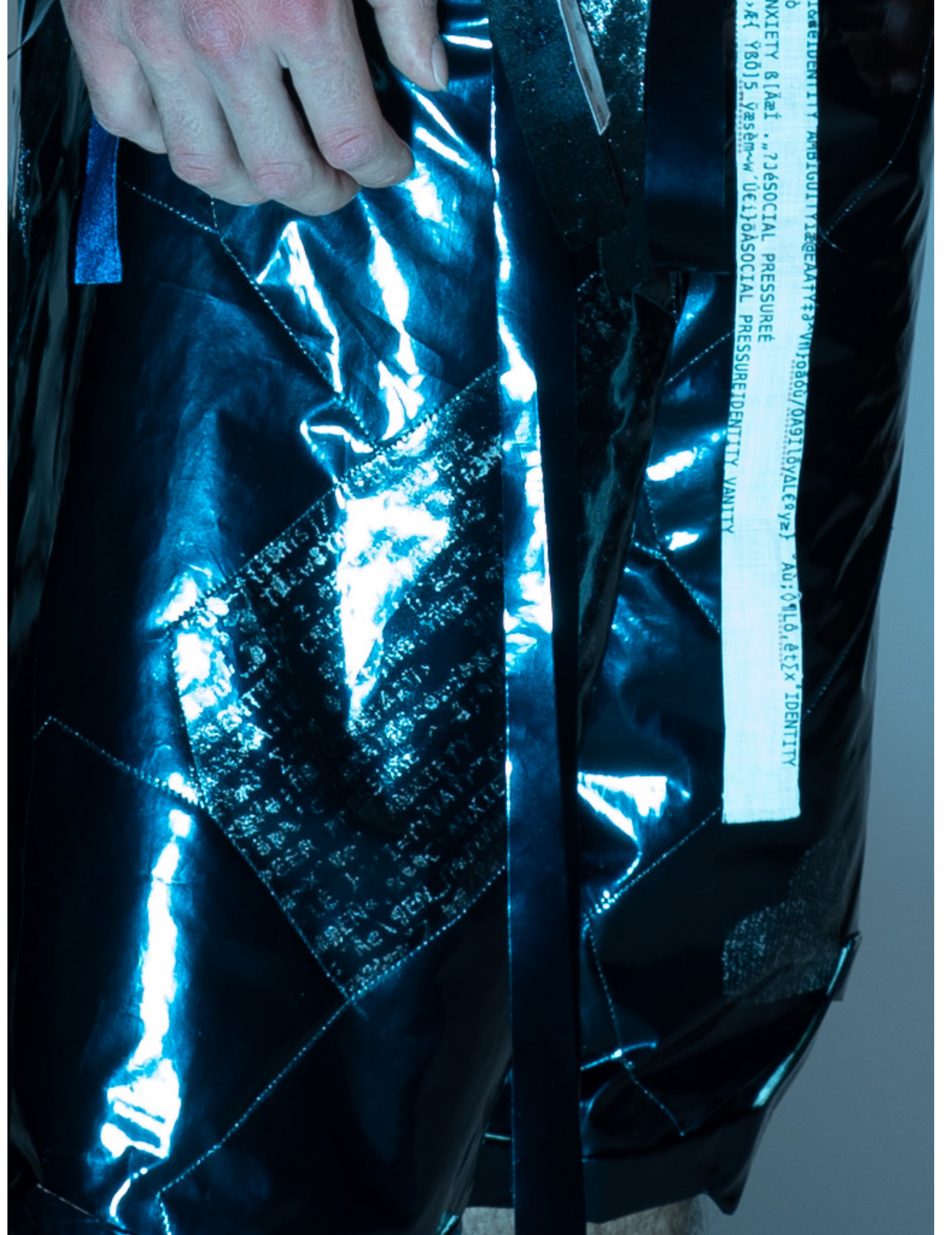
look_4

look_5











more pictures/lookbook: https://docs.wixstatic.com/ugd/30b999_6f35443363a64c159e91fdaa3c9080d2.pdf

Sally Wang
BFA Fashion Design, Parsons School of Design
wangr899@gmail.com
917-562-5726
sallywangdesign.com